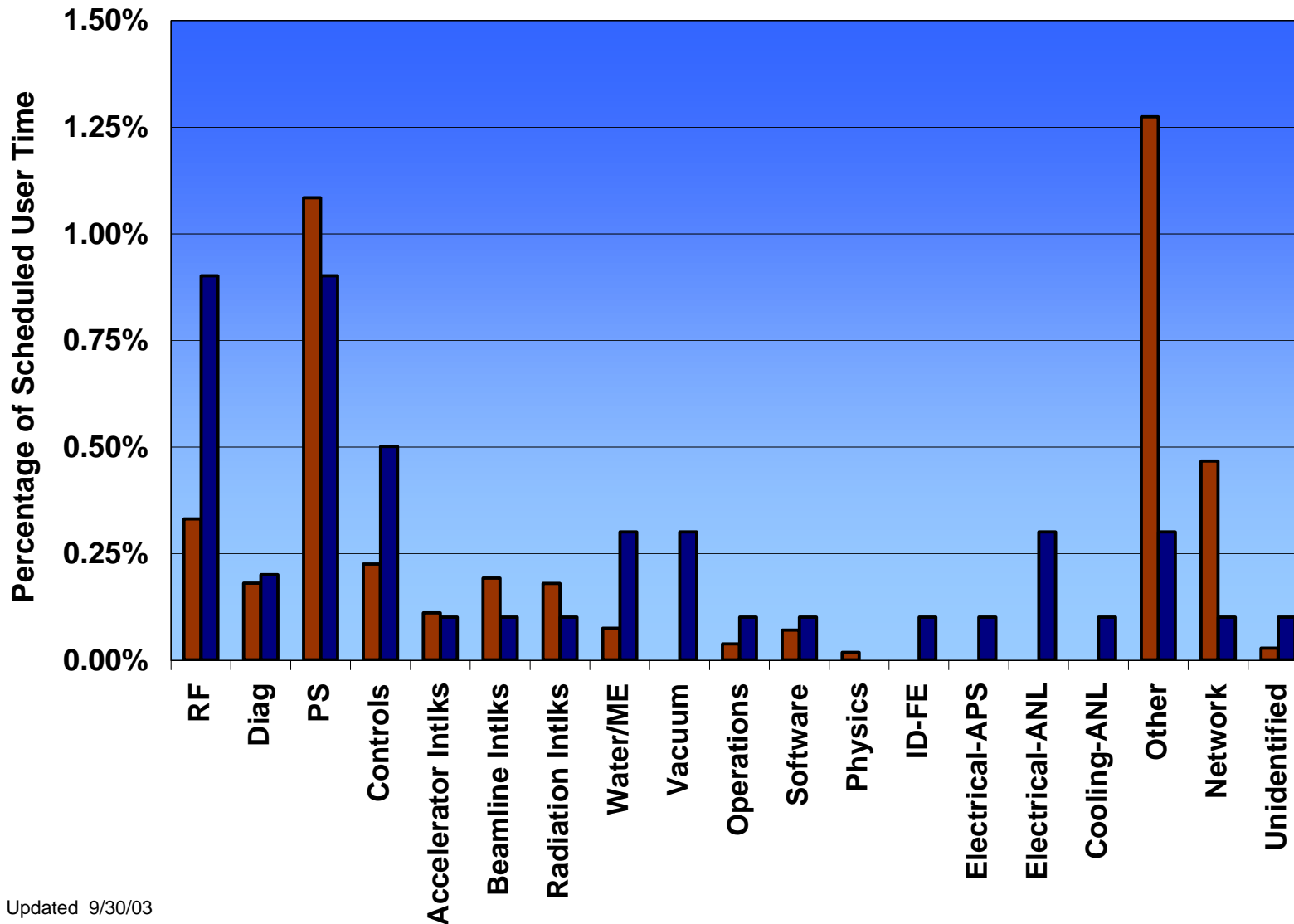
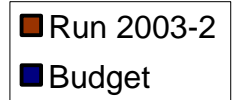


Run 2003-2 Downtime by System

May 28 through August 25, 2003

Scheduled User Time = 1816.0 hours

User Downtime = 77.4 hours



Downtime Budget

- 0.90% RF
- 0.20% Diagnostics
- 0.90% PS
- 0.50% Controls
- 0.10% Accelerator Intlks
- 0.10% Beamline Intlks
- 0.10% Radiation Intlks
- 0.30% Water/ME
- 0.30% Vacuum
- 0.10% Operations
- 0.10% Software
- 0.00% Physics
- 0.10% ID-FE
- 0.10% Electrical - APS
- 0.30% Electrical - ANL
- 0.10% Cooling - ANL
- 0.30% Other
- 0.20% Network
- 0.10% Unidentified
-
- 4.8% Total